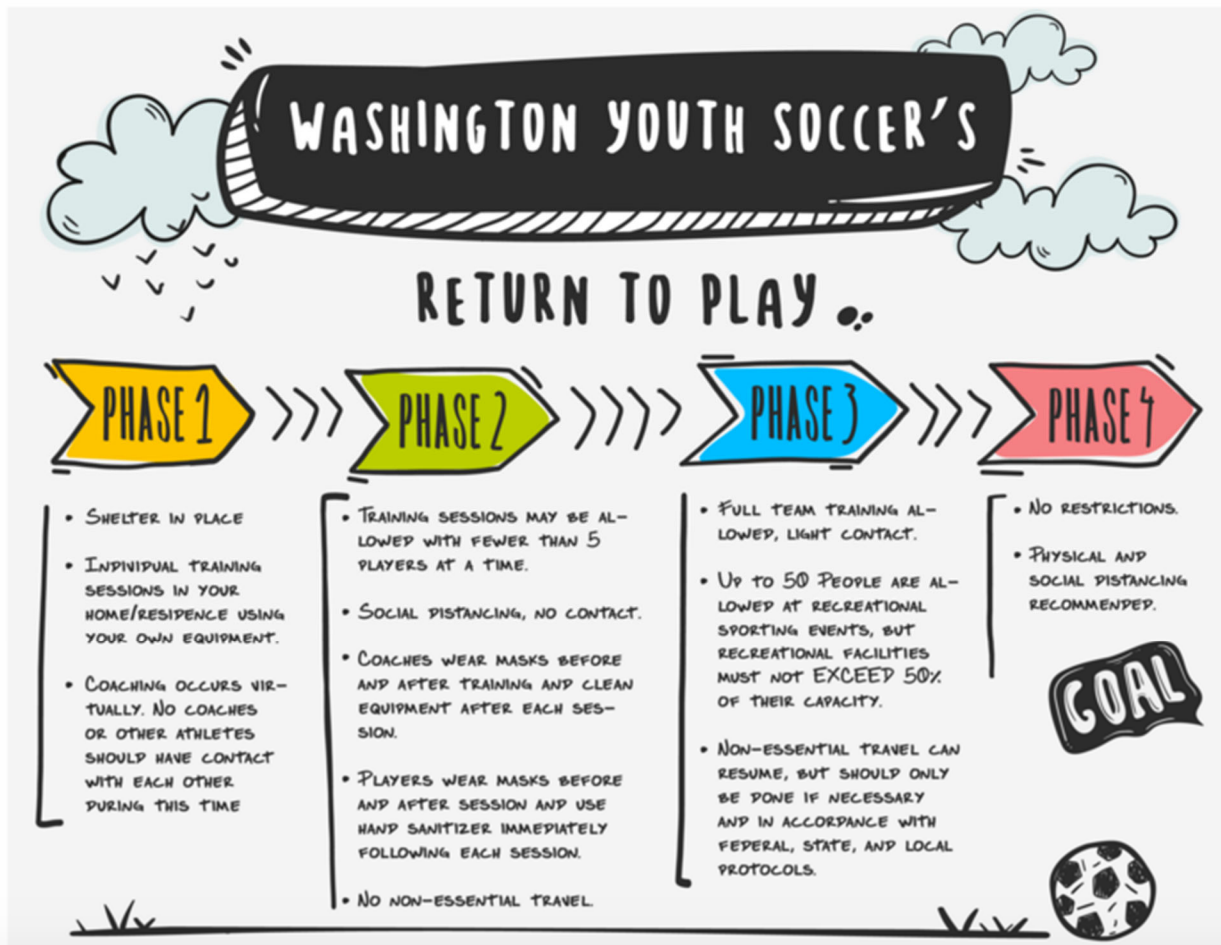


RETURN TO PLAY PLAN

As we look ahead to a return to soccer as our governor moves forward with Washington state's phased opening, we want to reach out today with some important information for all SYSA families.

SYSA has been working with (and will continue to work with) our national and state affiliates (United States Youth Soccer Association and WA Youth Soccer Association respectively), trusted advisors from our medical community as well as our local and state governments to develop guidelines for the return-to-play, and to ensure we are in compliance with all regulations.

SYSA's neighborhood recreational clubs will be able to return to play once we all move into the governor's 'Phase 3' (see the chart below).



DISCLAIMER: THE INFORMATION IN THIS DOCUMENT IS NOT INTENDED OR IMPLIED TO BE A SUBSTITUTE FOR PROFESSIONAL MEDICAL ADVICE, DIAGNOSIS, OR TREATMENT. ALL CONTENT INCLUDING TEXT, GRAPHICS, IMAGES, AND INFORMATION, ARE PROVIDED FOR GENERAL INFORMATIONAL PURPOSES ONLY.